



**DONGUAN LINHONG  
BUILDING DECORATION  
MATERIAL CO., LTD**

Address: Dongguan city,  
Guangdong province, China

**Dylan Lau(Sales Manager)**

Email: [Dylan@naikemu.com](mailto:Dylan@naikemu.com)

Phone/Whatsapp:

0086-18029120121

Website:

<https://naikemu.en.alibaba.com>

**NECO** 耐可木  
**WOOD**

**NECOWOOD  
SPC FLOORING**





# CONTENTS

- #1 Introduction of SPC Flooring
- #2 Advantage of SPC Flooring
- #3 Production Process of SPC Flooring
- #4 Colors Option of SPC Flooring
- #5 Installation of SPC Flooring
- #6 Packaging and Loading of SPC Flooring





# #1 Introduction of SPC Flooring

SPC flooring is a new flooring material, which is advanced by being waterproof, rigid and dimensionally stable.

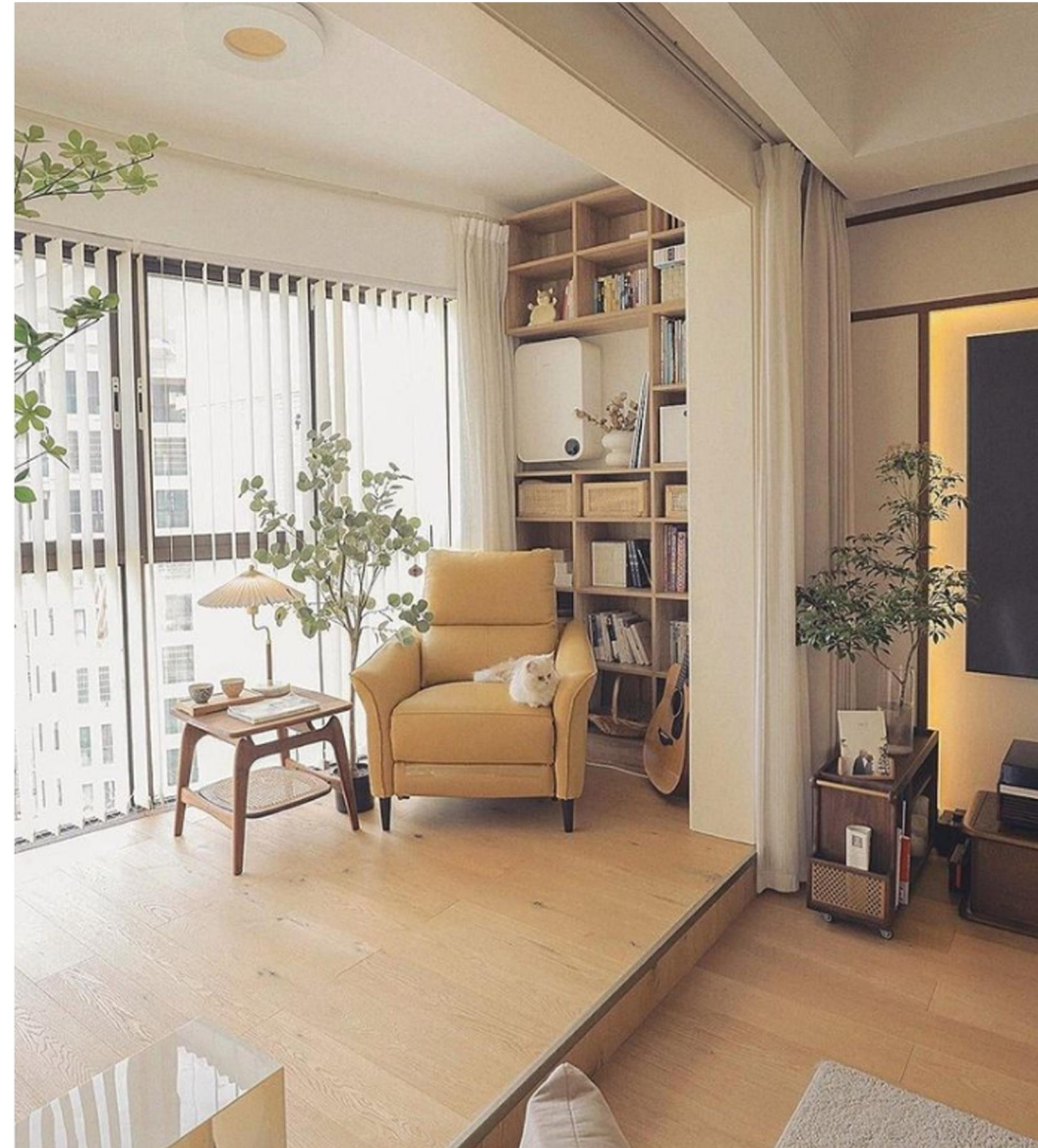
As a extruded core material, the SPC core is a composite material made of calcium carbonate, polyvinyl chloride and stabilizer. The wear layer and color films are pressed on the SPC core after the extruding. The IXPE underlay which sitck on the back is a good choice for high end usage. E.I.R finish and bevelled v-grooves bring the real wood feeling for SPC flooring.

As an advanced and experienced manufacturer of SPC flooring, Necowood is clear with the advantages of SPC flooring: 0 Formaldehyde, 100% waterproof, wayward paving any place, high wear resistance, resilient flooring and buffer fully, dimensional stability and not easily deformed, noise reduction, mute and enjoy a comfortable life, stain resistance and easy to manage, anti-slip & fast and big area installation.

Top and stable quality, fast production leading time, various beautiful colors, real wood surfaces, good services & long warranty, Necowood is the reliable partner for your SPC flooring.



SPC Flooring Thickness	3.5mm, 4.0mm, 4.2mm, 5.0mm, 6.0mm
SPC Flooring Dimension	150mm*935mm, 180mm*1220mm
Wear Layer Thickness	0.2mm, 0.3mm, 0.5mm
Color Option	Real Wood
IXPE Thickness Option	1.0mm, 1.5mm, 2.0mm





# #2 Advantage of SPC Flooring



## Fresh Material

Necowood uses 100% new fresh material instead of re-used material to keep the good quality



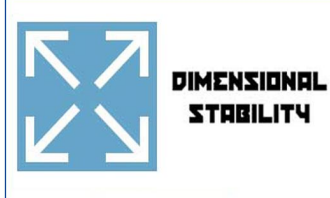
## Waterproof

As the main component of SPC is stone powder, so it performs well with water, and mildew will not happen with high humidity.



## Fire Retardant

The fire rating of SPC flooring is NFPA CLASS B. Flame retardant, not spontaneous combustion, leave the flame automatic out in 5 seconds.



## DIMENSIONAL STABILITY

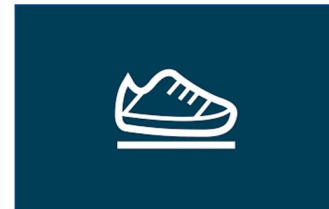
### Dimensionally Stable

Exposed to 80° heat, 6 hours---Shrinkage ≤ 0.1%; Curling ≤ 0.2mm



## No Formaldehyde

SPC is high quality stone powder&PVC resin, without harmful material such as benzene, formaldehyde, heavy metal.



## High Abrasion

SPC flooring has a transparent wear-resisting layer, whose revolution is up and higher than 10000 turns.



## Stain Resistance

SPC floor surface has been managed to use a special process and special UV coating, and is easy to clean.



## Anti Scratch

The surface of SPC flooring is thick and protected by the pearl painting, which is better to resist the scratch



## Fast Installation

The click system of SPC floor help people in installation, which can be installed on tiles or floors, and the installation of one room can be finished in 1 or 2 hours



# #3 Production Process of SPC Flooring

1 Raw material mixing system



2 Extruding system



3 Hot pressing system



4 traction system



5 Cutting system



6 Stacking system



7 Double UV coating



8 Groove Homag grooving line



9 Small plank checking & Package

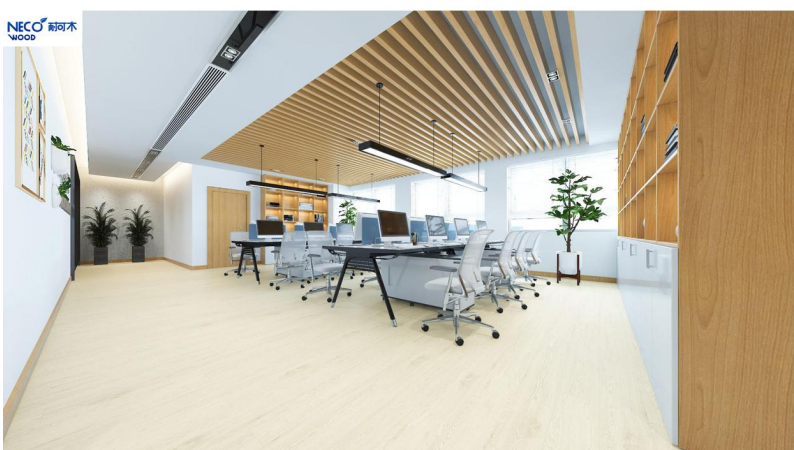


## #4 Colors Option of SPC Flooring





# Product and Application





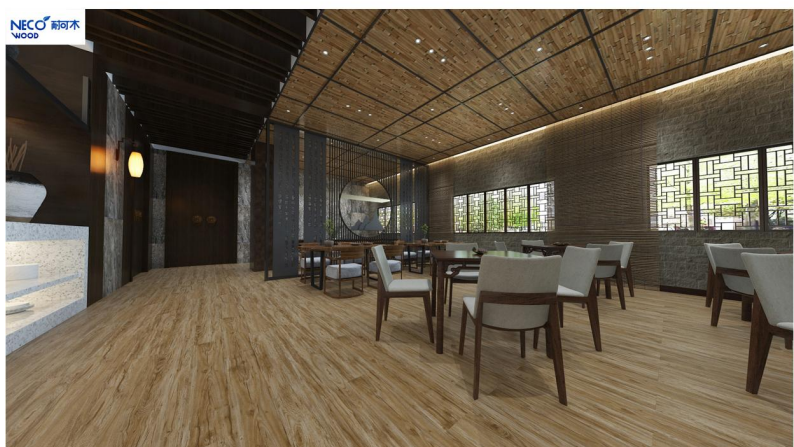
# Product and Application



**HD812**



**HD813**



**HD815**



**HD817**

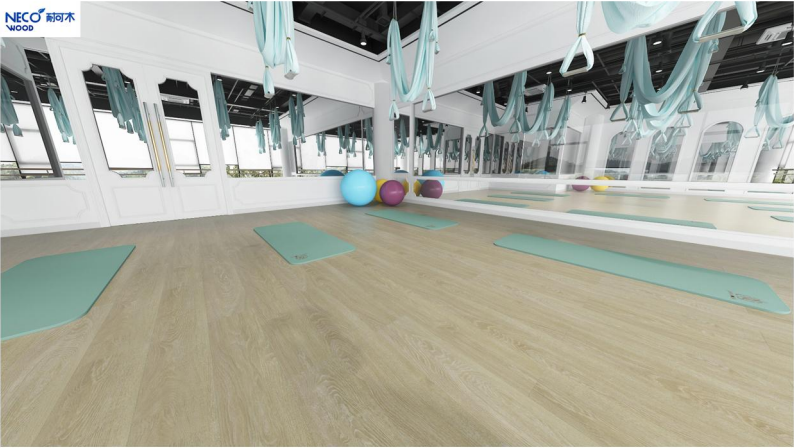


# Product and Application





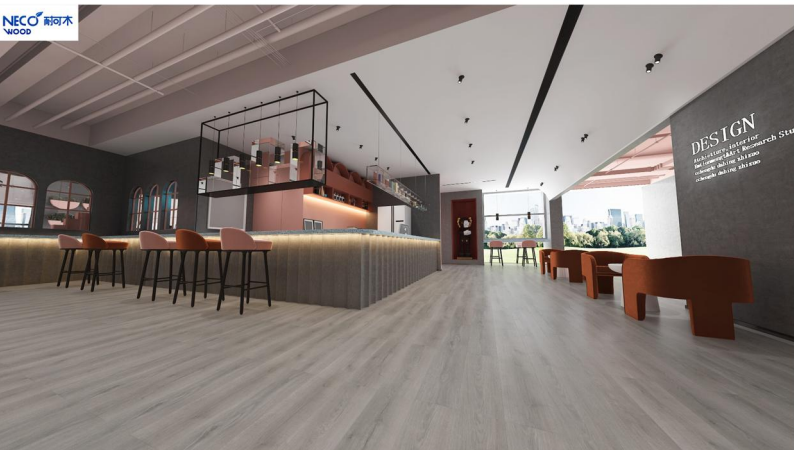
# Product and Application



**HD823**



**HD825**



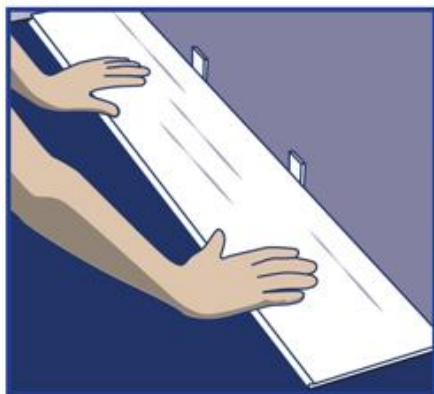
**HD826**



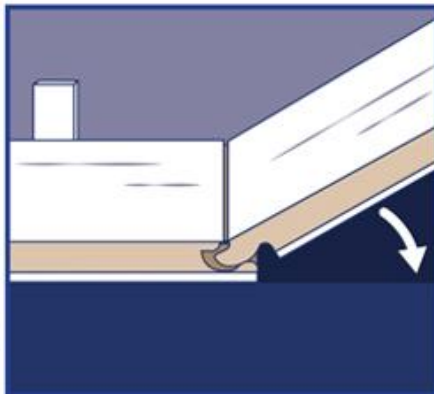
**HD827**



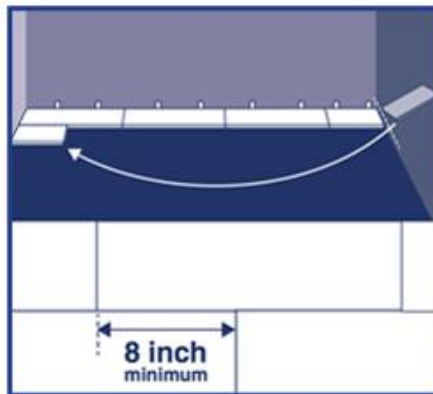
## #5 Installation of SPC Flooring



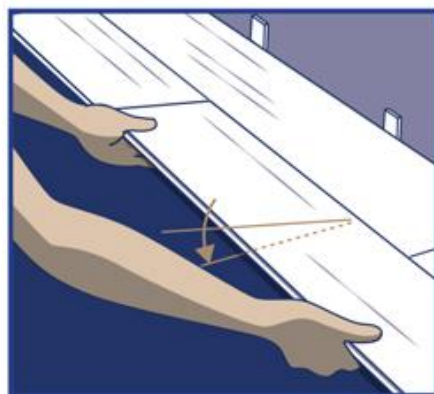
**Step 1**  
Begin installation working from left to right. Insert spacers at ends and edges where planks



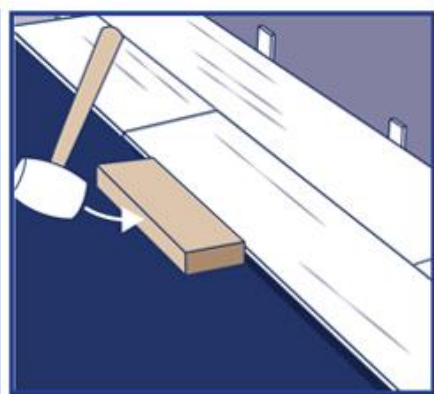
**Step 2**  
Lock short end of plank by inserting tongue into groove at an angle and drop in place.



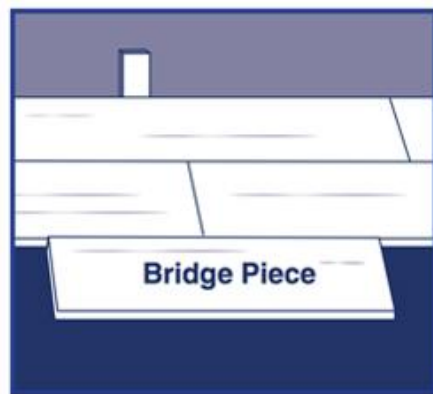
**Step 3**  
Use leftover plank from first row as starter for second row. There must be at least 20cm between plank end joints on adjacent rows.



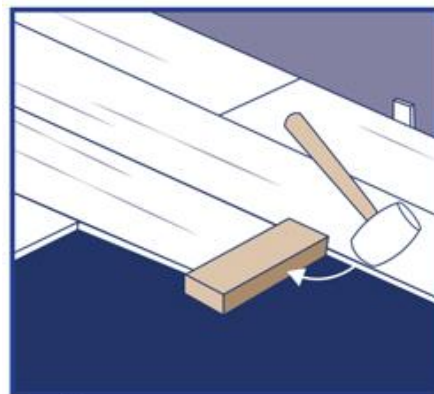
**Step 4:**  
Lock long edge of plank by inserting tongue into groove at an angle and drop in place. Slide plank toward end of previously installed plank until the tongue just touches the groove.



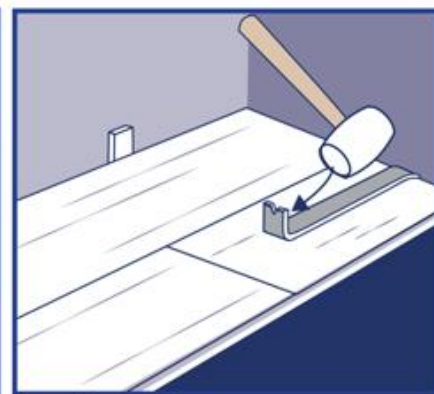
**Step 5**  
**IMPORTANT!** Use hammer and tapping block to tap long edge of plank to ensure a tight fit. **ANY GAPPING CAN COMPROMISE THE LOCKING SYSTEM!**



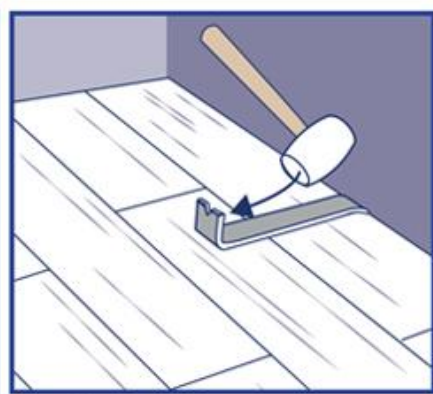
**Step 6**  
Attach a scrap piece of floor to bridge the gap between ends of planks.



**Step 7**  
Tap end of plank with hammer and tapping block to lock ends of final piece in row. Insert spacer and continue towards wall until installing the final plank in the row.



**Step 8**  
Use hammer and pull bar to lock long edges of planks on final row. Continue installation to final row.



**Step 9**  
Use hammer and pull bar to lock long edges of planks on final row.



# #6 Packaging and Loading of SPC Flooring

180mm*1220mm				
Thickness (mm)	Pcs per Carton	Ctns per Pallet	Pallets	TOTAL SQM (m <sup>3</sup> )
3.5mm	16 Pcs	65 Ctns	16 Pallets	3650
4mm	14 Pcs	65 Ctns	16 Pallets	3200
5mm	12 Pcs	65 Ctns	15 Pallets	2600
6mm	10 Pcs	65 Ctns	16 Pallets	2250







**THANKS FOR WATCHING**

**DONGUAN LINHONG  
BUILDING DECORATION  
MATERIAL CO., LTD**

Address: Dongguan city,  
Guangdong province, China

**Dylan Lau(Sales Manager)**

Email: [Dylan@naikemu.com](mailto:Dylan@naikemu.com)

Phone/Whatsapp:  
0086-18029120121

Website:

<https://naikemu.en.alibaba.com>

